







# FISE **2025** MONTPELLIER

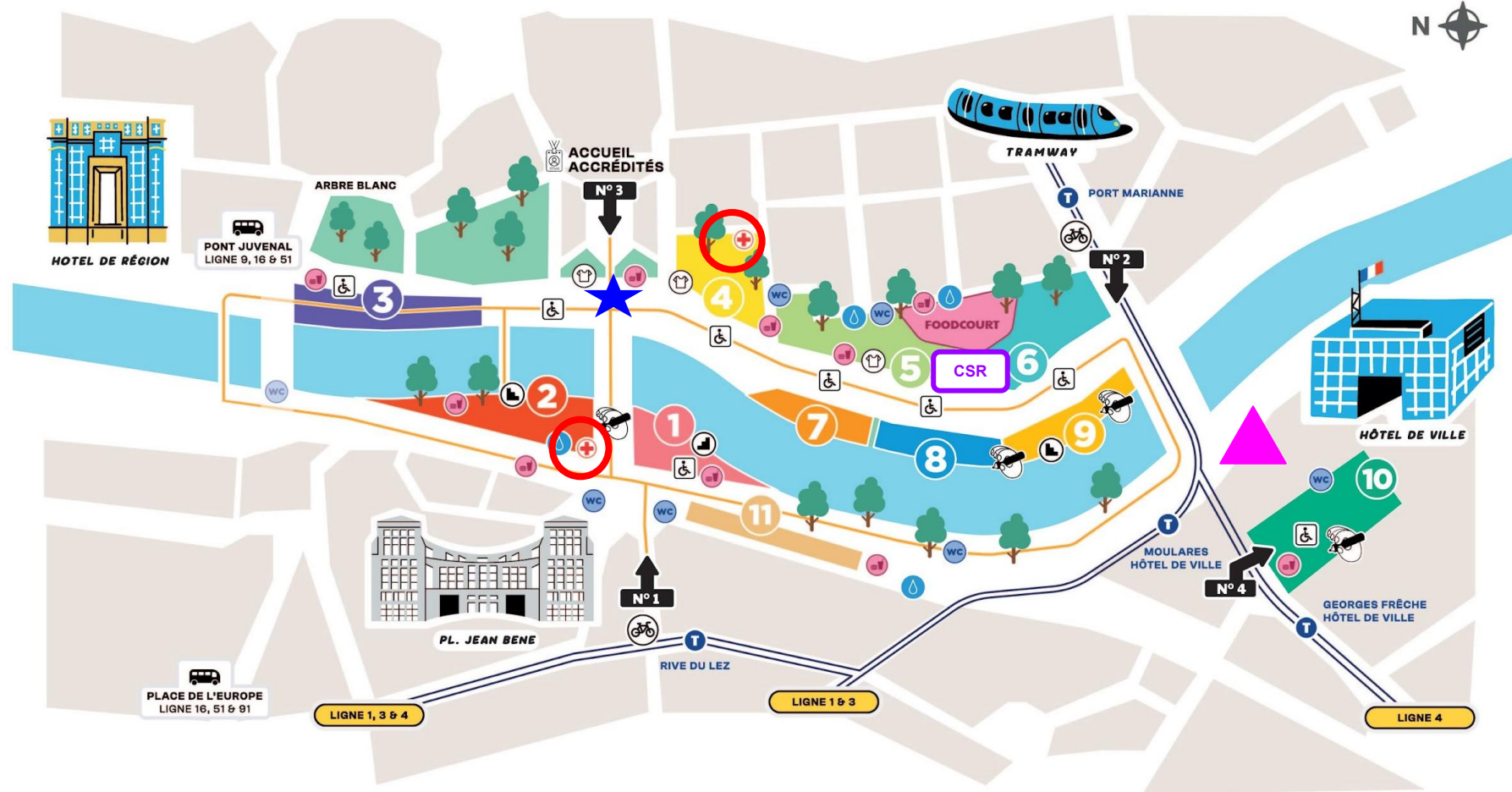
**MAY 28 TO JUNE 1**

## URBAN SPORTS SUMMIT

**MONTPELLIER | FRANCE**  
29 - 30 MAY 2025

# GENERAL MAP

-  **Municipal Police**
-  **Croix Rouge (Safe Zone)**
-  **Tent CSR (Safe Zone)**
-  **Marriott Hotel - Urban Sports Summit**



- 1** ZONE BMX
- 2** ZONE ROLLER - TROTT
- 3** ZONE SHRED

- 4** PATIO VIP
- 5** CHILL ZONE
- 6** FAMILY PARK

- 7** ZONE PARKOUR
- 8** ZONE FLAT BREAK
- 9** ZONE STREET

- 10** ZONE SPINE RAMP | BASKET 3X3
- 11** ZONE INITIATION

-  ENTRÉE BILLETTERIE
-  INSCRIPTIONS RIDER
-  BOUTIQUES OFFICIELLES
-  TRIBUNES
-  FOOD COURT
-  SNACKS
-  SANITAIRES
-  POSTE DE SECOURS
-  ESPACE PMR
-  POINT D'EAU
-  RACKS À VÉLO
-  ARRETS DE TRAM

# ACCREDITATIONS



## Where can I pick up my accreditation?

At the accreditation chalet on the Place de la Révolution française (Salle Aragon)

## Chalet opening hours

May 27 : 09:00 to 12:00 / 13:00 to 19:00

May 28 to JUNE 01 : 08:30 to 12:00 / 13:00 to 18:30

## PREREQUISITES:

- It is imperative that you present **your countermark** (received by e-mail) at the chalet to collect your accreditation.
- Accreditation is **personal** and **non-transferable**.
- Accreditation must be worn visibly at all times.
- **No entry to the site** if accreditation is lost or forgotten.
- For the **Urban Sports Summit**, if you cannot collect your accreditation before the summit, no worries, we will bring them to the Marriott Hotel on Thursday+Friday mornings. They will then be available for the rest of Thursday and Friday at the accreditation chalet.





# DIFFERENT ENTRANCES

## LEFT SIDE ENTRANCES

- ★ Place Révolution française (n°3)
- ★ Pont Zuccarelli (n°2)

Port Marianne tramway stop

## RIGHT SIDE ENTRANCES

- ★ Avenue du Pirée / Place Jean Bene (n°1)

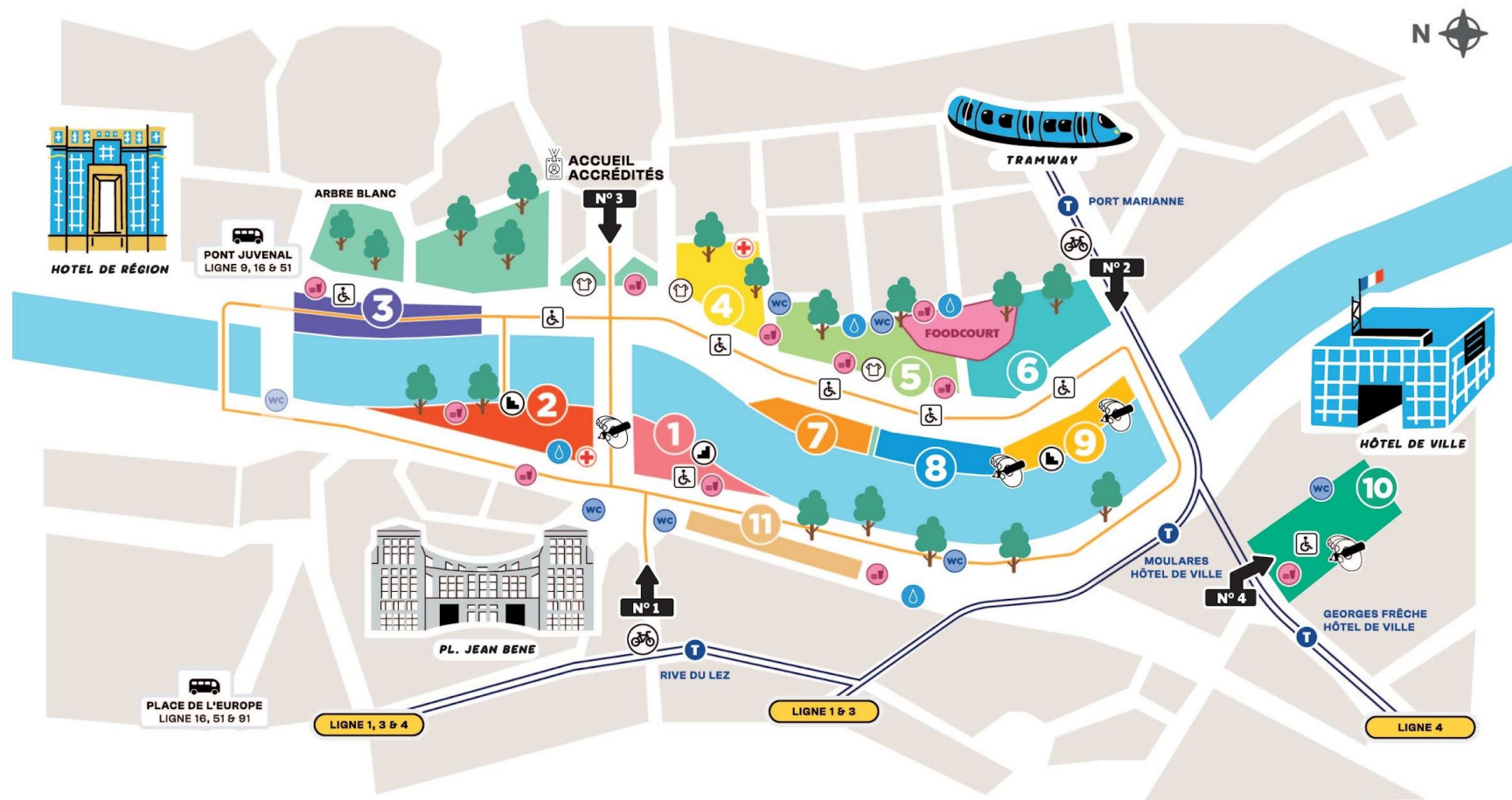
Rive du Lez / Place de l'Europe tramway stop

## SPINE ENTRANCE

- ★ Place Georges Frêche (n°4)

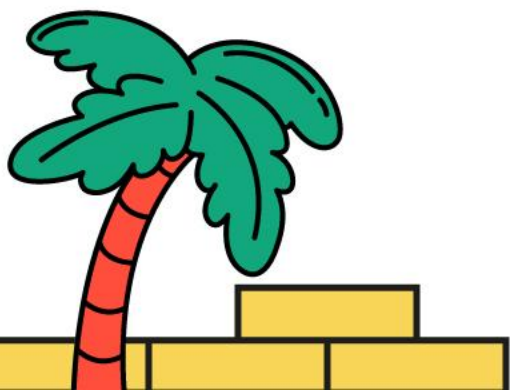
Georges Frêche / Moularès tramway stop

**NB : The Pirée entrance is gone!**



- |                       |               |                   |                                 |
|-----------------------|---------------|-------------------|---------------------------------|
| 1 ZONE BMX            | 4 PATIO VIP   | 7 ZONE PARKOUR    | 10 ZONE SPINE RAMP   BASKET 3X3 |
| 2 ZONE ROLLER - TROTT | 5 CHILL ZONE  | 8 ZONE FLAT BREAK | 11 ZONE INITIATION              |
| 3 ZONE SHRED          | 6 FAMILY PARK | 9 ZONE STREET     |                                 |

- |                       |                  |                |
|-----------------------|------------------|----------------|
| → ENTRÉE BILLETTERIE  | FOOD COURT       | ESPACE PMR     |
| INSCRIPTIONS RIDER    | SNACKS           | POINT D'EAU    |
| BOUTIQUES OFFICIELLES | SANITAIRES       | RACKS À VÉLO   |
| TRIBUNES              | POSTE DE SECOURS | ARRETS DE TRAM |





# FESTIVAL OPENINGS TIMES

	FISE – MAY 28 TO JUNE 1	SPINE – 29 TO 31 MAY
HOURS	09:30 – 21:00 (public evacuation at 20:30)	10:00 – 00:00 (public evacuation at 23:30)
HOURS – Food Court and Family Park	09:30 – 22:00 (public evacuation at 21:30)	X



# HOW TO GET TO FISE 2025 BY PUBLIC TRANSPORT

[TAM website - transports Montpellier](https://www.tam-montpellier.fr/)

## TRAMWAY



Stations (line 1,3 & 4)

- Georges Frêche Hôtel de Ville ✖
- Hôtel de Ville ✖
- Rives du Lez ✖
- Place de l'Europe ✖
- Port Marianne ✖

## BUS



Stations (line 9,16 & 51)

- Place de l'Europe
- Pont Juvénal
- Port Marianne





## HIGHLIGHTS

# SPORTS HIGHLIGHTS (to date)

## WEDNESDAY 28 MAY

10h-20h  
QUALIFICATION UCI BMX Freestyle  
Park World Cup Men

12h25-17h05  
QUALIFICATION Scooter Street Pro  
Men

12h-13h30  
QUALIFICATION Breaking Battle 1VS1  
BBOY

14h30-16h  
QUALIFICATION Breaking Battle 1VS1  
BGIRL

16h-16h30  
FISE X PARA BMX Contest

## THURSDAY 29 MAY

11-15h20  
QUALIFICATION UCI BMX Freestyle  
Park World Cup Women

14h15-19h05  
QUALIFICATION Scooter Freestyle  
Spine Ramp

15h50-20h  
QUALIFICATION BMX Street Pro Men

19h-20h  
DEMI FINALE / FINALE International  
Breaking Battle 1VS1 BBOY - BGIRL

22h-23h  
Skateboarding Spine Ramp Pro Men  
Contest

## FRIDAY 30 MAY

10h-11h40  
DEMI FINALE UCI BMX freestyle Park  
World Cup Women

12h50-14h30  
DEMI FINALE UCI BMX freestyle Park  
World Cup Men

13h-18h  
QUALIFICATION Skateboarding Street  
Pro Men

13h30-14h  
QUALIFICATION Parkour Speed World  
Cup Women

14h25-20h  
QUALIFICATION UCI BMX Flatland  
World Cup Men

14h30-19h  
QUALIFICATION Parkour Freestyle  
World Cup Men

19h-19h30  
FINALE Basket 3X3 Féminins

21h30-23h  
FINALE Scooter Freestyle Spine Ramp  
Pro Men

## SATURDAY 31 MAY

11h30-13h  
FINALE UCI BMX freestyle Park World  
Cup Women **LIVE**

10h-10h25  
FINALE Skateboarding Street Amateur  
Men

14h-15h30  
FINALE UCI BMX freestyle Park World  
Cup Men **LIVE**

16h30-18h  
BMX Street Pro Men Battle TOP 8

18h00-18h30  
FINALE Parkour Freestyle Men **LIVE**

17h45-18h15  
FINALE Basket 3X3 Masculins

18h45-19h  
FINALE Parkour Speed Run Women  
**LIVE**

21h15-23h  
FINALE Pat Casey BMX Freestyle Spine  
Ramp Pro Men **LIVE**

## SUNDAY 1 JUNE

11h15-12h30  
FINALE Scooter Freestyle Park Pro  
Men **LIVE**

13h30-15h  
FINALE Skateboarding Street  
Lez'Battle Men Top 8 **LIVE**

16h15-16h45  
FINALE Parkour freestyle World Cup  
Women **LIVE**

16h05-16h55  
FINALE UCI BMX Flatland World Cup  
Women

17h-17h15  
FINALE Parkour speed World Cup Men  
**LIVE**

18h-19h20  
FINALE UCI BMX Flatland World Cup  
Men **LIVE**

## LÉGENDES

	Flatland/break
	Parkour
	BMX
	Spine ramp
	Street
	Basket 3X3







# COMMUNICATION CHANNELS

# OFFICIAL WEBSITE OF FISE



[FISE Montpellier 2025 : Le festival des sports extrêmes](#)



 **ACCUEIL**

 **BILLETTERIE**

 **INFOS PRATIQUES**

 **FISE S'ENGAGE**

 **SHOP – FISE**

 **DEVIENS BÉNÉVOLE**

 **DEVENEZ EXPOSANT**

 **CONTACT**



**FISE** **28 MAI** **2025**  
**RIVES DU LEZ** **01 JUIN**

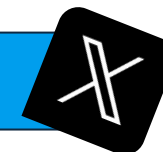


# COMMUNICATING ABOUT THE EVENT



@FISE WORLD

@FISE WORLD



@FISE

@FISE OFFICIAL



@FISE WORLD

@FISE



## EVENTS TAGS

#FISEMontpellier2025

#FISEMontpellier

#FISEWorld







# FISE 2025 MONTPELLIER

# RSE

# CSR



FISE Montpellier is firmly committed to reducing **its environmental footprint and promoting sustainability** at all levels of its organisation. We are aware that we have a long way to go **to become a 100% responsible company**. We don't consider ourselves irreproachable, but we have set ourselves **the goal of always doing better**.



FISE is the flagship event of our business, which is why we have chosen it **as the model for our CSR development**, with certification to the responsible management standard for the events sector, **ISO 20121, obtained for the 2024 edition**.



Since 2021, we have been gradually integrating a CSR approach into our business, **with the support of SANAE**. Aware that we have a long way to go, we are aiming for continuous improvement without claiming to be perfect.



# OUR PRIORITIES



## Plastic packaging

Plastic packaging accounts **for 75% of the volume of waste at FISE**. The aim is to eliminate single-use plastics as soon as possible.



## Reuse

Reusing and/or transforming our structures, tarpaulins and fabrics reduces the consumption of raw materials. Thanks to our partner Mas Réemploi, **over 10 tonnes were reused last year**.



## Water fountains

**Set up by the city** to reduce plastic waste (80% of plastic waste is water bottles).



## Food Waste

Associations in Montpellier **collect unsold food and redistribute it to people in need**.



## Responsible, plant-based food

We favour **local and seasonal food** to reduce our impact and support local producers. We also **offer vegetarian menus**.

### Instructions to be followed:

- **Separate waste in the bins provided on site**
- **Limit consumption of bottled water**
- **Sort food waste**



# TRANSPORT



## Involving our stakeholders

Transport accounts for 75% of greenhouse gas emissions on the event's carbon footprint. That's why we invite all our festival-goers, partners and volunteers to come to FISE using public transport, car-pooling, bikes, skates and scooters as much as possible.



## Strategic location

FISE Montpellier is located on the sides of the River Lez, very close to public transport.



## Securing your bike

Bicycle racks are being made available for the event by the metropolis on the outskirts of the festival.



## Transport partners

The region is offering transport solutions to help you get to FISE without a car. BlaBlaCar facilitates carpooling from all over France. During the festival, TAM Montpellier 3M is increasing the frequency of trams serving the site, with a free season ticket for local residents.

New: 18-26 year-olds can take advantage of the + = 0 voucher with the SNCF and the Region, offering 50% off their first journey and free travel from 11<sup>e</sup>.

# WASTE AND RECYCLING PLAN





**SEE YOU SOON  
AT THE FISE!**

**SEE YOU SOON  
AT THE FISE !**